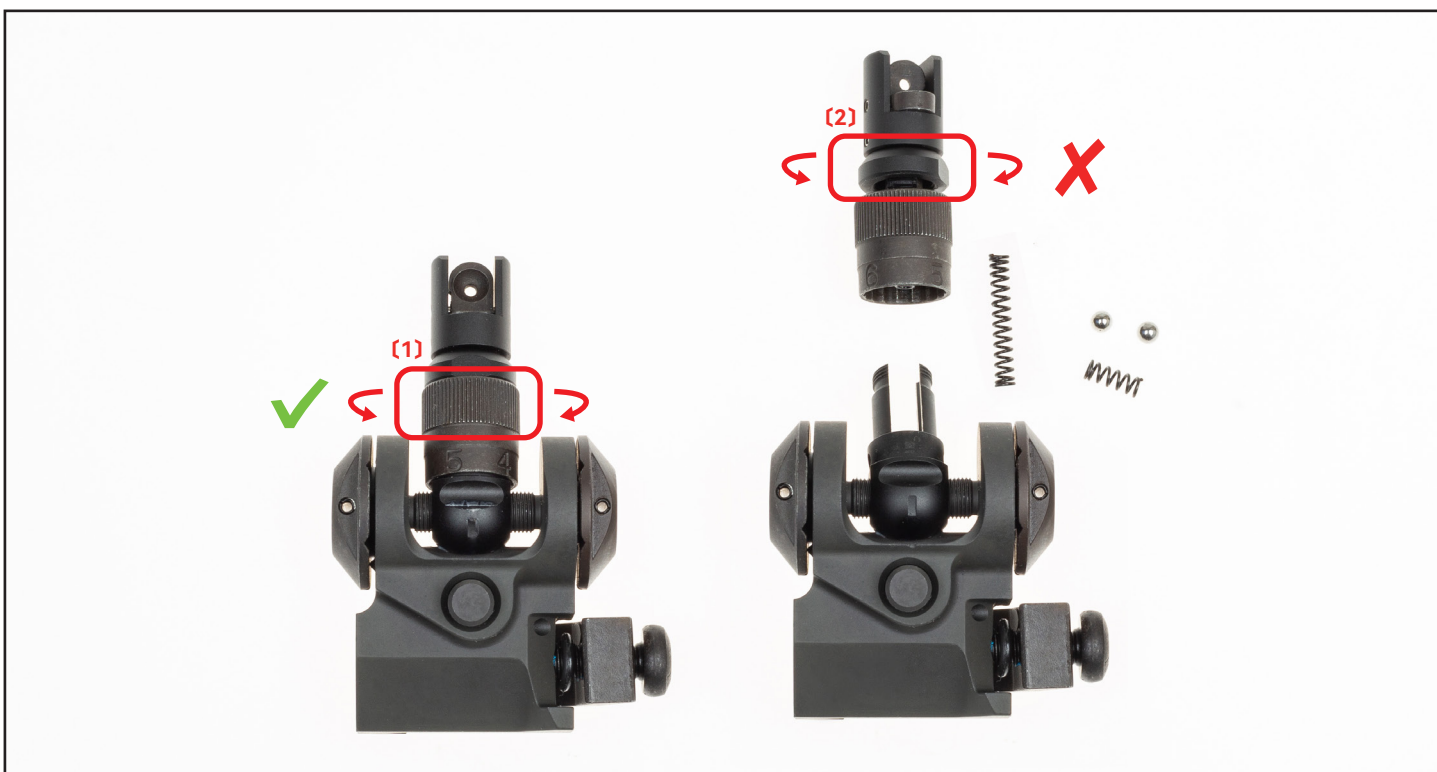
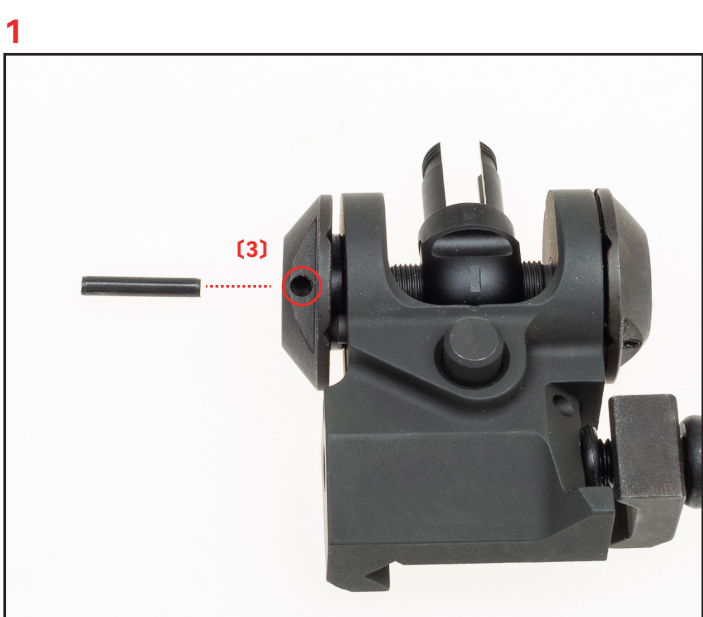


# SCAR 照門故障修復

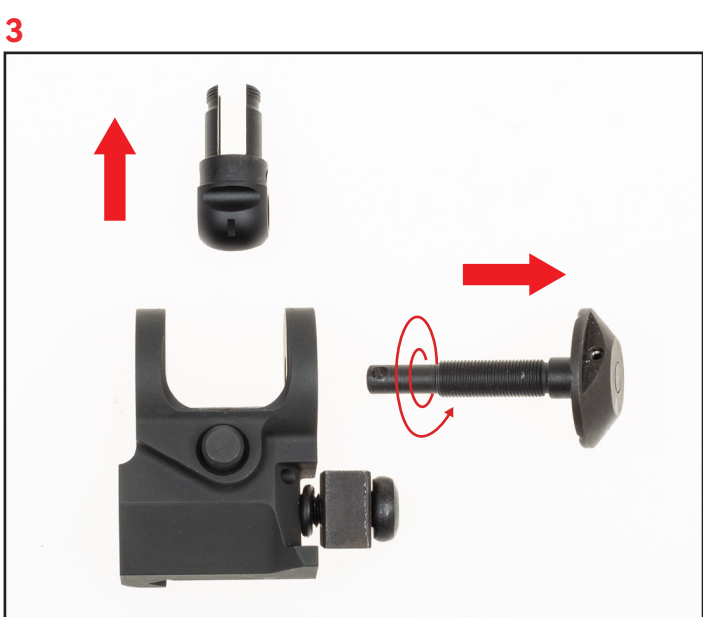
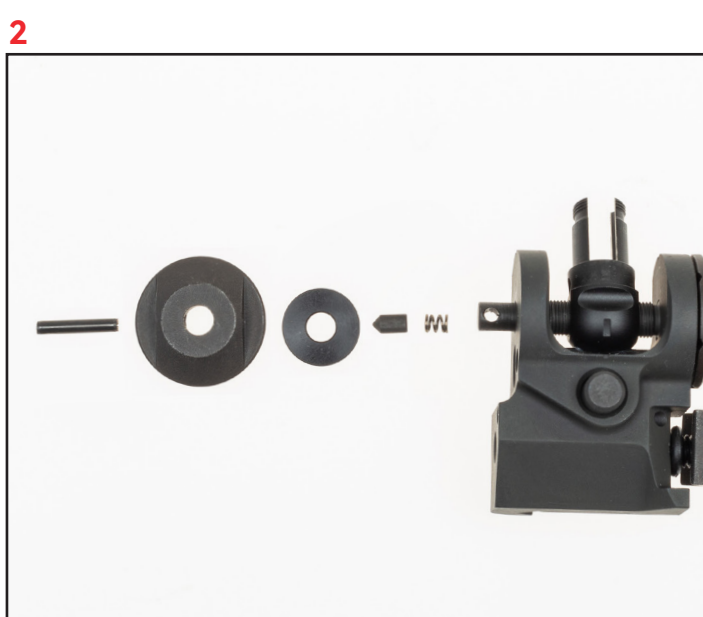
## SCAR REAR SIGHT TROUBLESHOOTING AND REPAIR



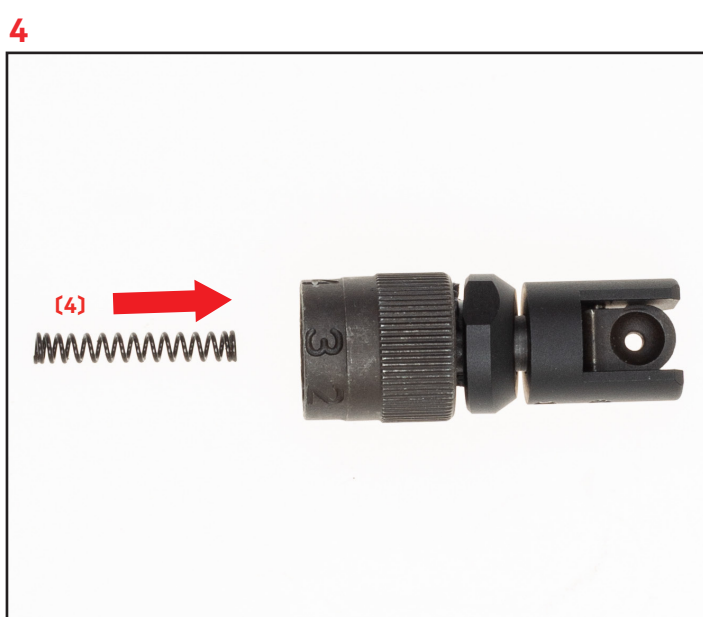
調節照門時，請務必扭動調節旋鈕(1)，不可扭動螺帽(2)，否則可能導致照門零件鬆動甚至脫出。  
 若因操作不當導致零件脫出，可參照以下安裝教程重新裝回。  
 When adjusting the rear sight, be sure to turn the adjustment knob (1). Do not turn the lock nut (2), as this may cause the sight components to become loose or even detach.  
 Should any part come loose due to improper operation, you can refer to the installation tutorial below to reinstall it.



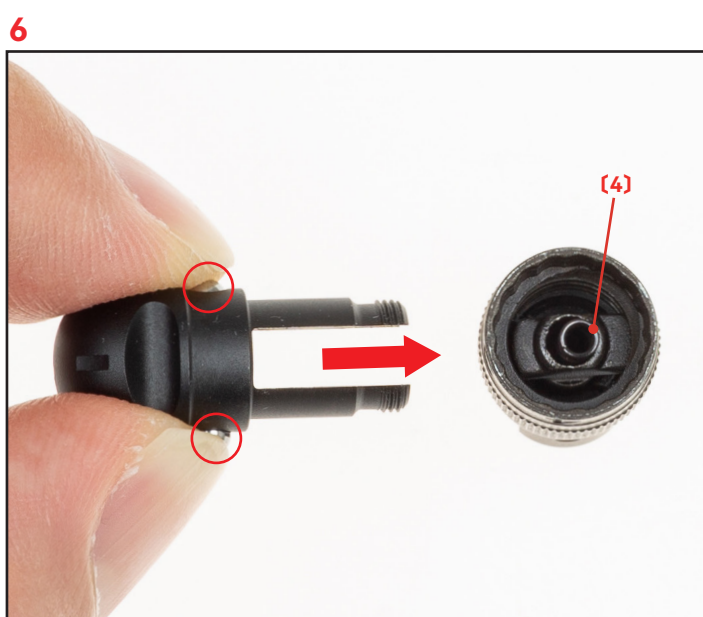
1 請先使用錘子與銷衝，將風偏調節輪上的銷釘(3)小心敲出，隨後即可將這一側的零件拆下。  
 First, use a hammer and punch to carefully drive out the drift pin on the windage adjustment knob (3). You can then remove the parts on this side.



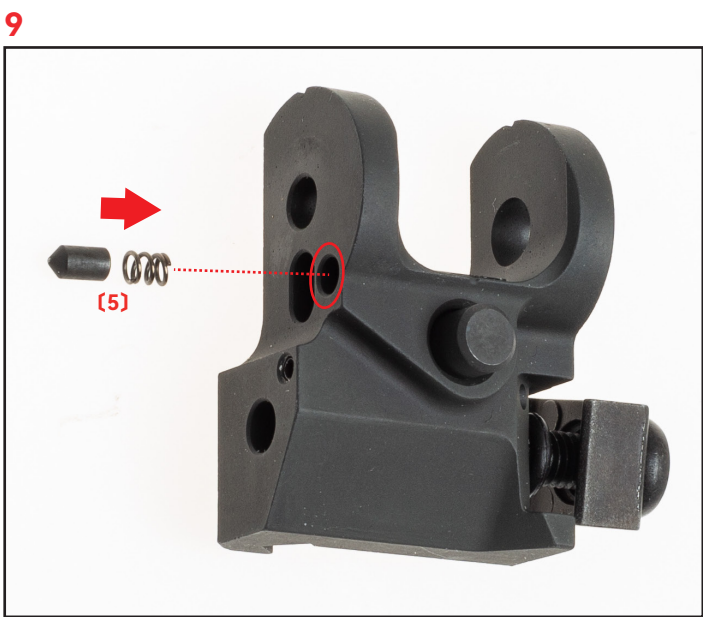
3 將調節桿旋出拆卸，並取出照門折疊零件。接著，把調節芯彈簧(4)裝回照門內部。  
 Unscrew and detach the adjustment lever, then remove the folding sight component. Then, reinstall the adjustment core spring (4) into the interior of the sight.



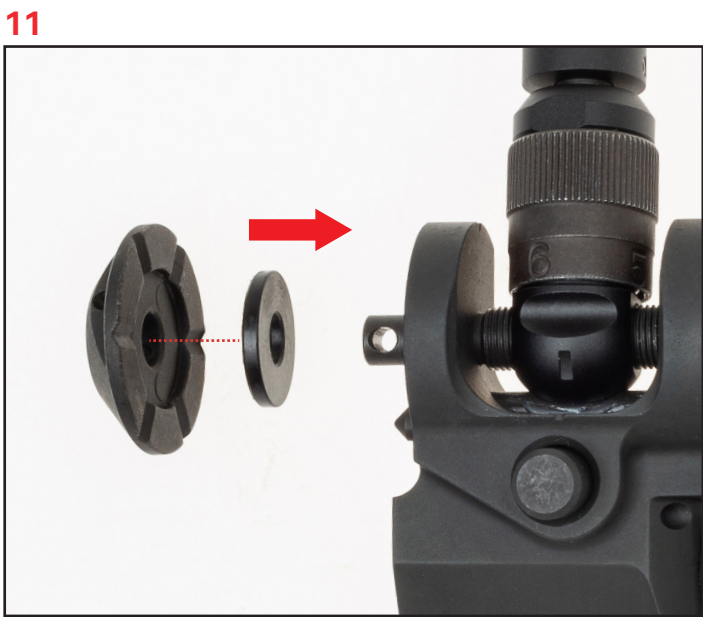
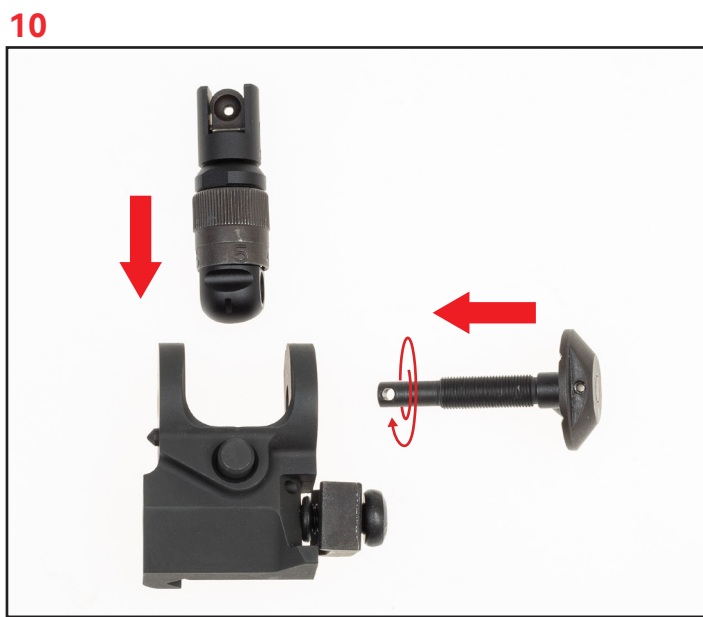
5 把兩顆玻璃珠和彈簧重新裝回照門折疊零件中，請用手指按住兩顆玻璃珠，以防彈簧彈力導致玻璃珠彈飛。然後重新把照門折疊零件和照門主體組裝起來。  
 Reinsert the two steel balls and their spring into the folding sight component. Use your finger to hold down both steel balls to prevent them from being ejected by the spring tension. Then, reassemble the folding sight component with the main body of the rear sight.



7 組裝前請先將照門主體調整至中間高度，避免處於最高或最低位置，否則可能導致組裝後無法調節。安裝時需注意照門與折疊零件的方向，切勿裝反，最後順時針擰緊螺帽(2)即可完成固定。  
 Before assembling, please adjust the rear sight main body to the mid-height position. Avoid leaving it at the highest or lowest position, as this may result in the inability to adjust it after assembly. During installation, pay attention to the orientation of the sight and the folding component, and make sure not to install it backwards. Finally, tighten the lock nut (2) clockwise to complete the fixation.



9 把風偏定位彈釘及彈簧(5)裝回底座，再對準位置放入照門並旋入調節桿。  
 Reinstall the windage detent pin and its spring (5) into the base. Then, align and insert the rear sight into position, and screw in the adjustment lever.



11 將風偏調節輪與墊片裝回後，請先確認彈釘(5)是否卡入槽位，接著按住調節輪對準調節桿上的孔洞，並用工具將銷釘裝上，完成組裝。  
 Reinstall the windage adjustment wheel and its shim. First, confirm that the detent pin (5) is properly seated in its groove. Then, hold the adjustment wheel against the hole on the adjustment lever, and use a tool to install the detent pin to complete the assembly.

